

# Twin Wiper blades



## Highlights

Conventional mild steel wiper blade in sizes of 1200 and 1300 mm with two separate small blades for maximum reach on large curvative windscreen.

R5B moulded rubber with a light graphite finish (this is 2021 development with an improved rubber sort, that replaces R5A).

## Description

### Frame

- 2 x Heavy duty wiper blade frames utilising heavy duty rubber, combined in a custom fabrication that is designed to an Exalto Rail wiper arm using the standard bolt connection
- The custom fabrication has an anti-corrosion base coat (720 hours plus protection) with a DB approved polyester powder top coat.
- A range of premium options are available to suit individual requirements which include 2 x integrated wash jets (each with 4 high flow adjustable nozzles).
- Full stainless steel build for 1,000+ hours salt spray performance from the whole wiper blade.

### Rubber R5B

- Moulded rubber and additional chemical components and graphite.
- Rubber comply with automotive standards related to mechanical properties, wiping performance and ozone resistance.

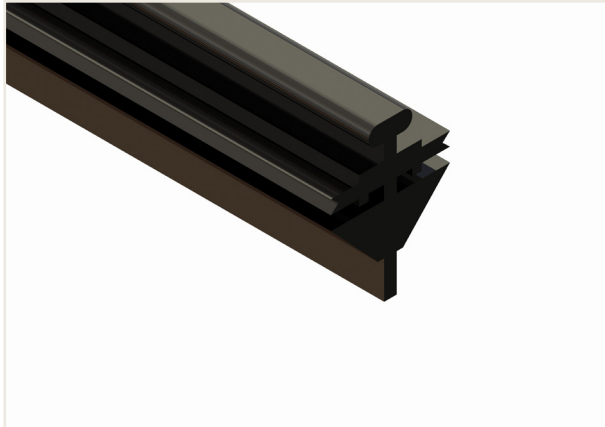


## Model series

Twin blade	Size	Speciality
2100:1200.02.R5B	1200 mm	for Left hand parking
2100:1200.04.R5B	1200 mm	for Right hand parking
2100:1300.02.R5B	1300 mm	for Left hand parking
2100:1300.04.R5B	1300 mm	for Right hand parking

## Specifics

- The moulded rubber profile is very strong and flexible enabling a smooth switch.
- Simple to fit
- Tough and durable
- Low friction
- High wipe quality
- Enables use on large curvative windscreens



Picture #1 rubber profile



Picture #2 detail