

Decca Wiper

Heavy duty straightline version

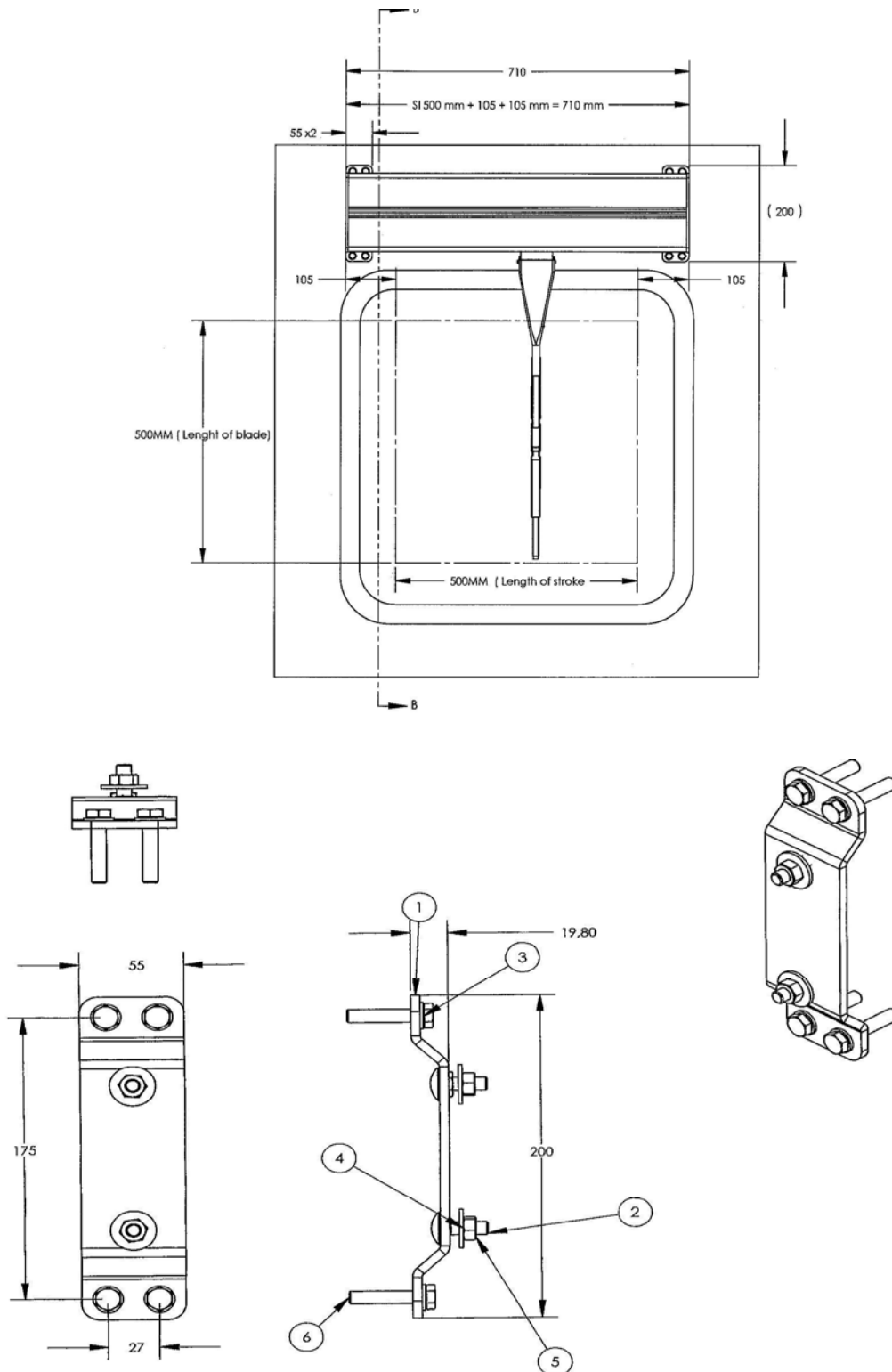
Installation manual

MODEL: SO95115 (Single)
MODEL: TO95315 (Twin)







TABLE OF CONTENTS

TABLE OF CONTENTS	1
ASSEMBLE OF BRACKETS	2
INSTALLATION OF WIPER	3
ATTACHING CONTROL PANEL, SINGLE UNIT	4
CONTROL UNIT ASSEMBLY WITH COLLECTED OPERATION	5
ATTACHING CONTROL PANEL, MULTIPLE UNIT	6
CONTROL PANEL ASSEMBLY WITH SEPARATED OPERATION	6
ELECTRONIC UNIT 12155 ONE TO EACH WIPER	7
GROUP CONTROL OF THE WIPERS	8
EASY TO OPERATE.....	8
FOR INCREASED SAFETY AN RELIABILITY:.....	9

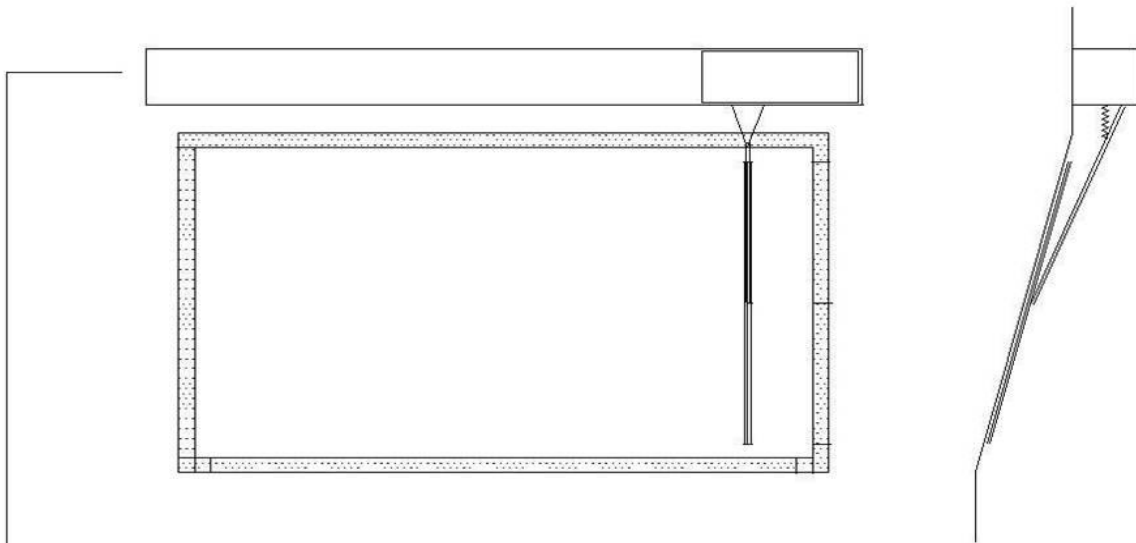
ASSEMBLE OF BRACKETS


6	4	Seksantskrue M8 x40 MM DIN 931 A4			ISO 4014 - M8 x 40 x 40-N
5	3	M8 låsemutter DIN 985 A4			Hexagon Nut ISO 4032 - M8 - W - N
4	2	M8 skive DIN 9021 A4			Washer DIN 9021 - 8.4
3	4	Skive M8 DIN 125 A4			Washer DIN 125 - A 8.4
2	2	Låseskrue M8 x 25 MM. DIN 603 A4	AISI 316L	17,867	10570351
1	1	Festebraket til skott	EN-AW 5052	150,38	10570173
ITEM NO.	QTY.	DESCRIPTION	MATERIAL	Weight	PART NUMBER

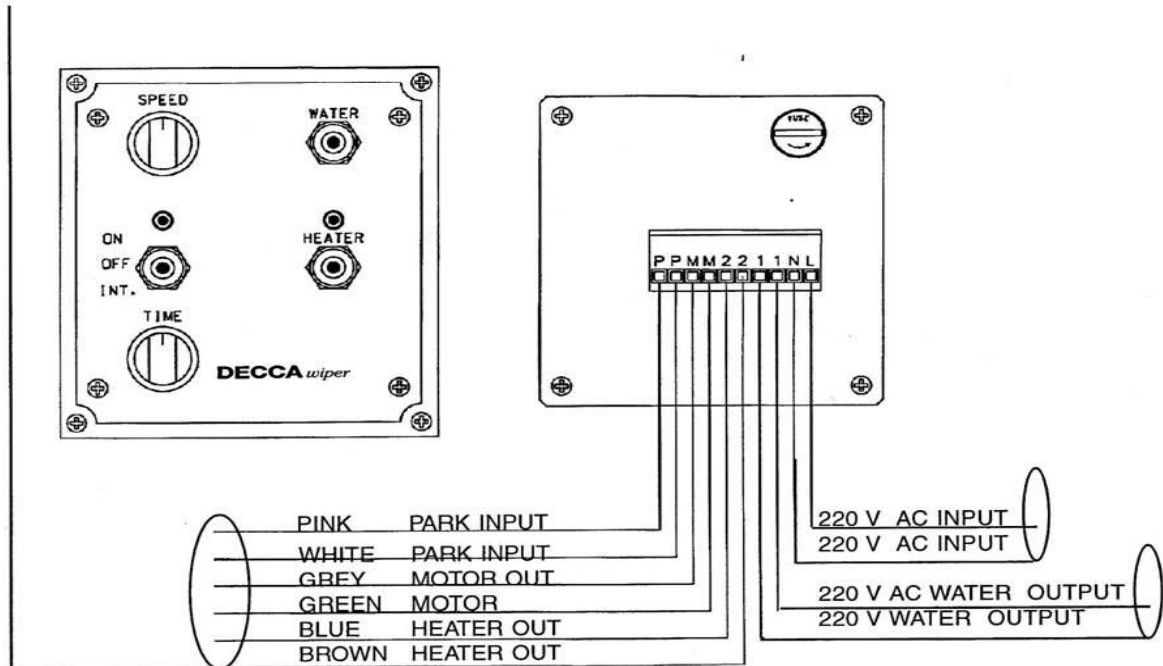
INSTALLATION OF WIPER

Step	Comment
<p>First mount the fixing brackets, two per wiper. See Tab. 1, under Wiper Specifications, for correct measurements. Use screws or weld the brackets.</p>  <p>Bulkhead cable inlet <i>must be ready before</i> installing the wiper house.</p>	<p>Fixing brackets are also available in other materials than aluminium.</p>
<p>Mount wiper house to the fixing brackets.</p> 	
<p>Mount the two springs.</p> 	<p>Be careful so the springs not hit the window.</p>
<p>Mount the wiper arm, and gently tighten the screws.</p> 	<p>First cut wiperarm in correct distance.</p>
	<p>It is very important to make good ground-terminations.</p>

ATTACHING CONTROL PANEL, SINGLE UNIT



7 CORE CABLE W/SCREEN.

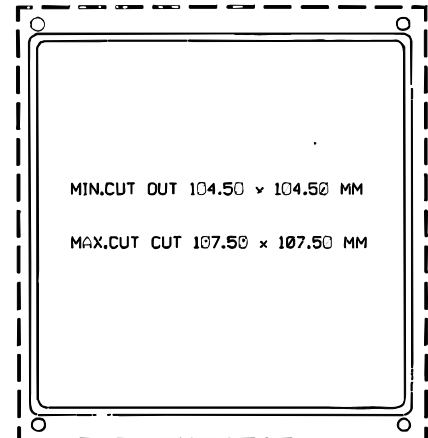
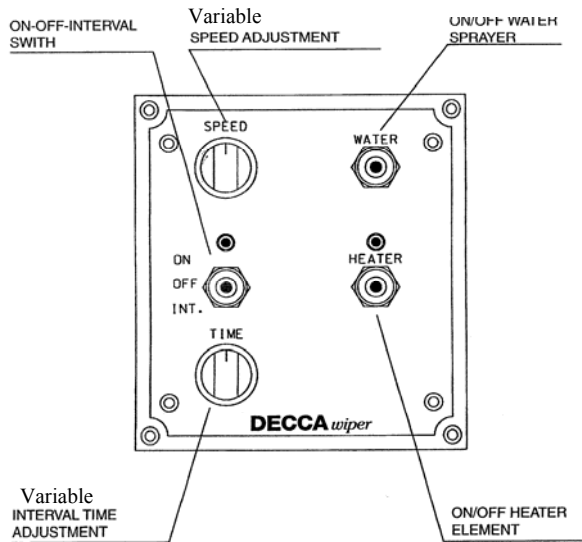


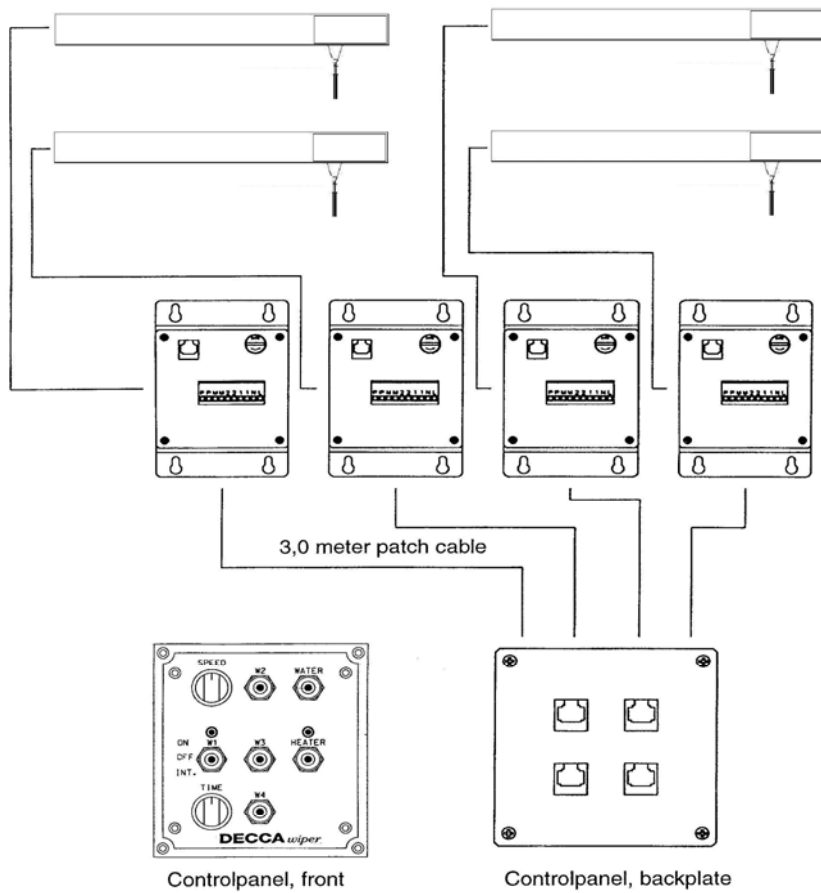
Control unit assembly with collected operation

Control unit can be assembling on bulkhead or console.

Control unit connect to the electronic unit with patchable or direct to the panel unit next to a wiper.

The depth of the control unit is 150mm and there must be a 40-50mm clearance for the cable attachment. Attached the Control unit with 4 screws trough the front panel.



ATTACHING CONTROL PANEL, MULTIPLE UNIT***Control panel assembly with separated operation***

The control panel assembly same way as for the control unit above. The cutting measurement is the same.

The depth of the control unit is 150mm and there must be a 40-50mm clearance for the cable attachment. Attached Control unit with 4 screws trough the front panel.

Electronic Unit 12155 one to each wiper

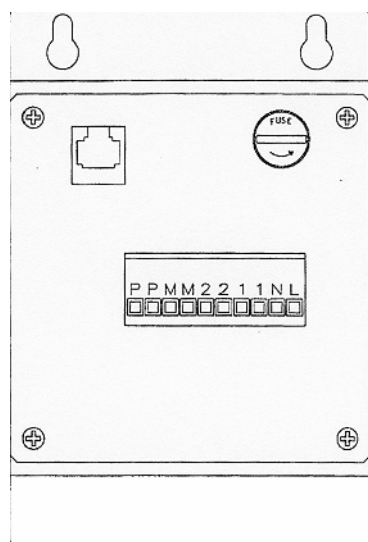
This contain main signal centre to the wiper.

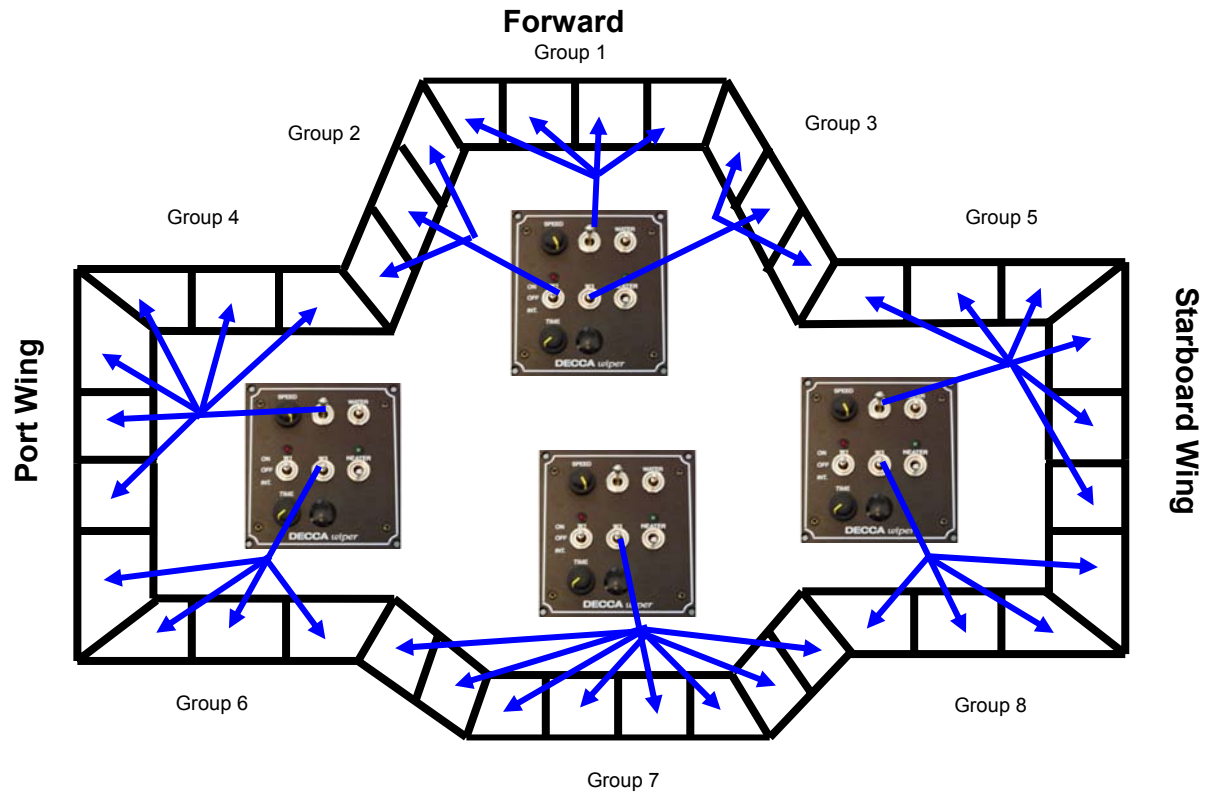
Electronic Unit assembles with:

2 ground wire to the ships voltage.

7 shield wire to the wiper house. (Delivered with standard 3m cable)

Unit placed on suitable locality with good access for service. There are standard complementary 3,0M patch cable be twin control panel and electronic unit.



GROUP CONTROL OF THE WIPERS

Large bridges can be divided into Zones, each having its own local control system. Having selected the control areas and functions, we configure the connection of the modules according to the agreed grouping arrangement. Decca Wiper gives you the flexibility to manage a fully functional window wiper system with integral wash and air purge. The system also controls wiper and bridge window heaters from a conveniently positioned control location.

Easy to operate

Control box for console or bulkhead installation

Operating voltage: AC/DC

High quality electronic design with the following features:

- Variable speed control
- Variable interval control
- Parking
- Heater switch
- Water spray switch
- Fuse

For increased safety an reliability:

- Low voltage status in front panel
- High voltage switching carried by insulated relays
- Stroke adjustment settings for low and high speed

Manufacture:

STEND METALL AS

Espehaugen 25, 5258 Blomsterdalen, Bergen NORWAY

TLF: +47 55 11 23 00 FAX: +47 55 11 23 01 e-mail: post@stendmetall.no