

# DECCA wiper

**Heavy duty straightline version**

## **Technical Specifications**

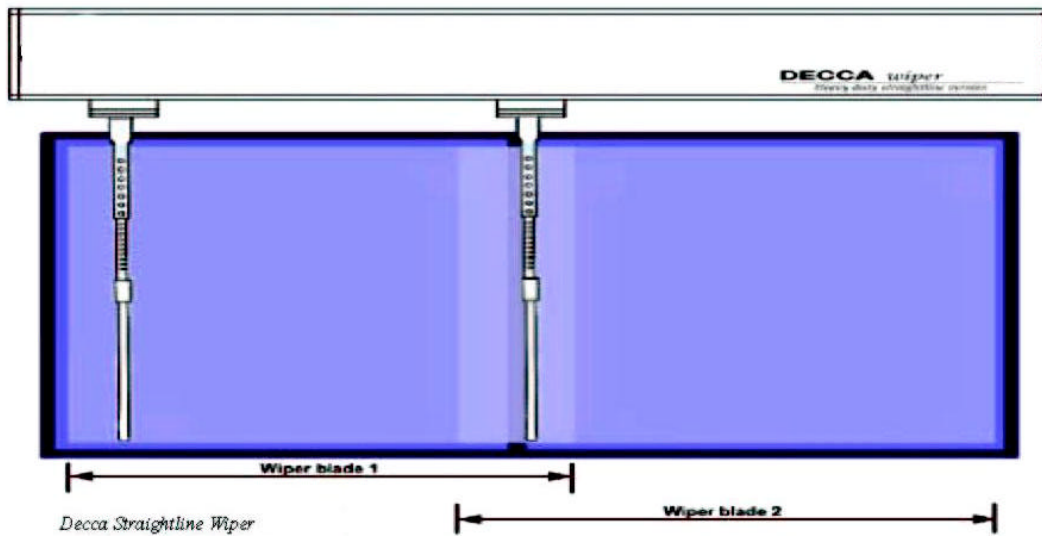
**MODEL: SO1057**      ( Single )  
**MODEL: TO1057**      ( Twin )



# Content

- 1. SPECIFICATIONS .....2**
- FIG1    SINGLE WIPER.....3
- FIG2    TWIN WIPER.....3
- FIG 3    DESCRIPTION OF COMPONENTS.....4
- 2. WARRANTY .....5**

## 1. Specifications



Specifications					
	Single		Twin		
Stroke	Min	300mm	Min	600mm	
	Max	3000mm	Max	5000mm	
Arm	Max	800mm	Max	800mm	
	Blade	Max	1000mm	Max	900mm
Wiper speed	Min	0,5m per second		Min	0,5m per second
	Max	1,0m pr second		Max	1,0m pr second
Motor	AC/DC with fast speed/slow/intermittent				
Heater	75W				
Mounting	Above and/or below the window				
Parking sensor	Induction type				
Spray nozzles	1 up to 1000mm stroke, 2 for longer stroke length, with 12 mm diameter on piping.				
IP Class 66	Protected against heavy seas				

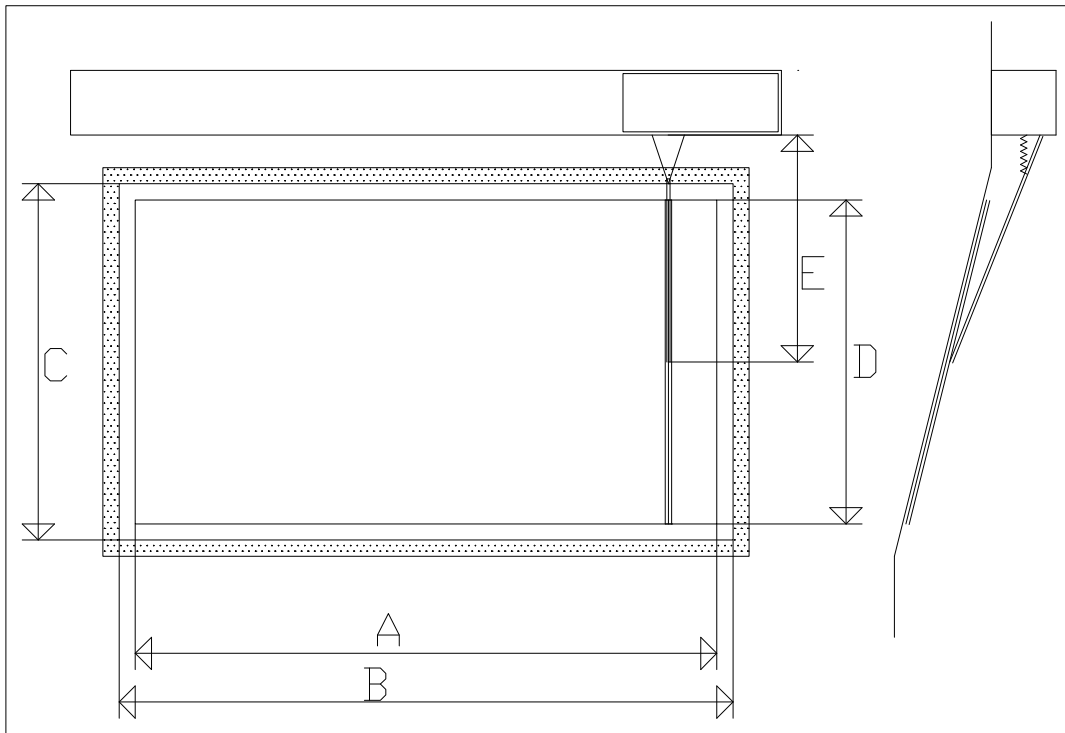
**Table 1**

Wiper house length, mm:	710	810	910	1010	1110	1210	1310	1410
Stroke length, mm:	500	600	700	800	900	1000	1100	1200

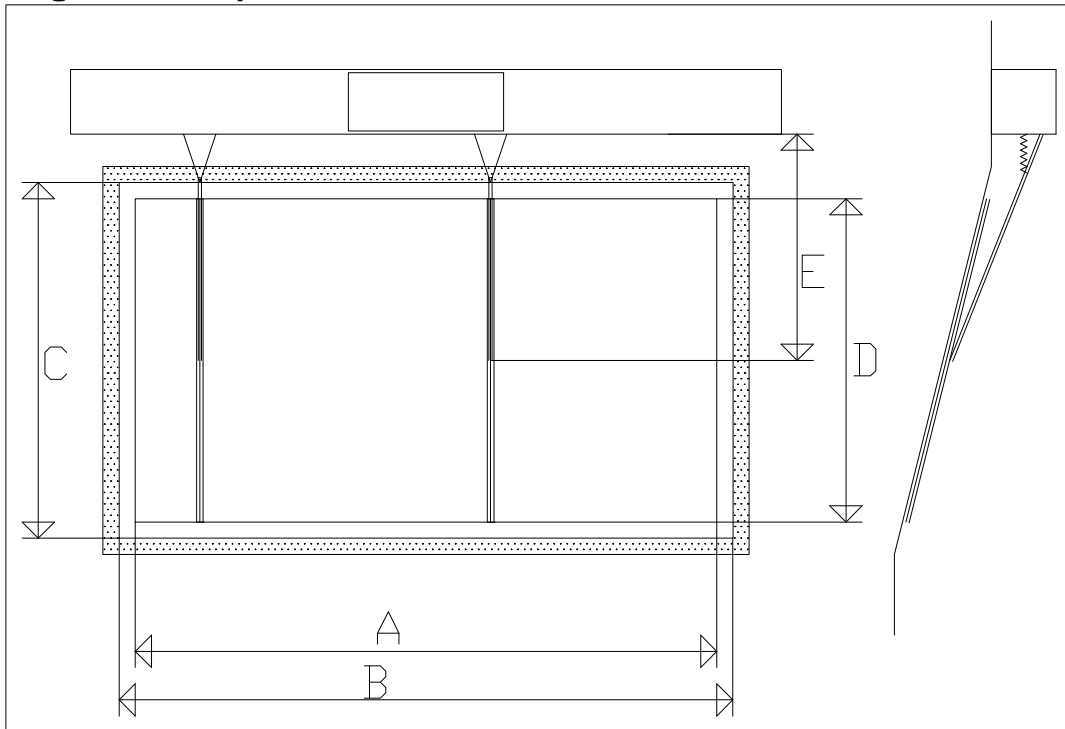
Wiper house length, mm:	1510	1610	1710	1810	1910	2010	2110	2210
Stroke length, mm:	1300	1400	1500	1600	1700	1800	1900	2000

Tailor-made at any length from 500mm to 5000mm

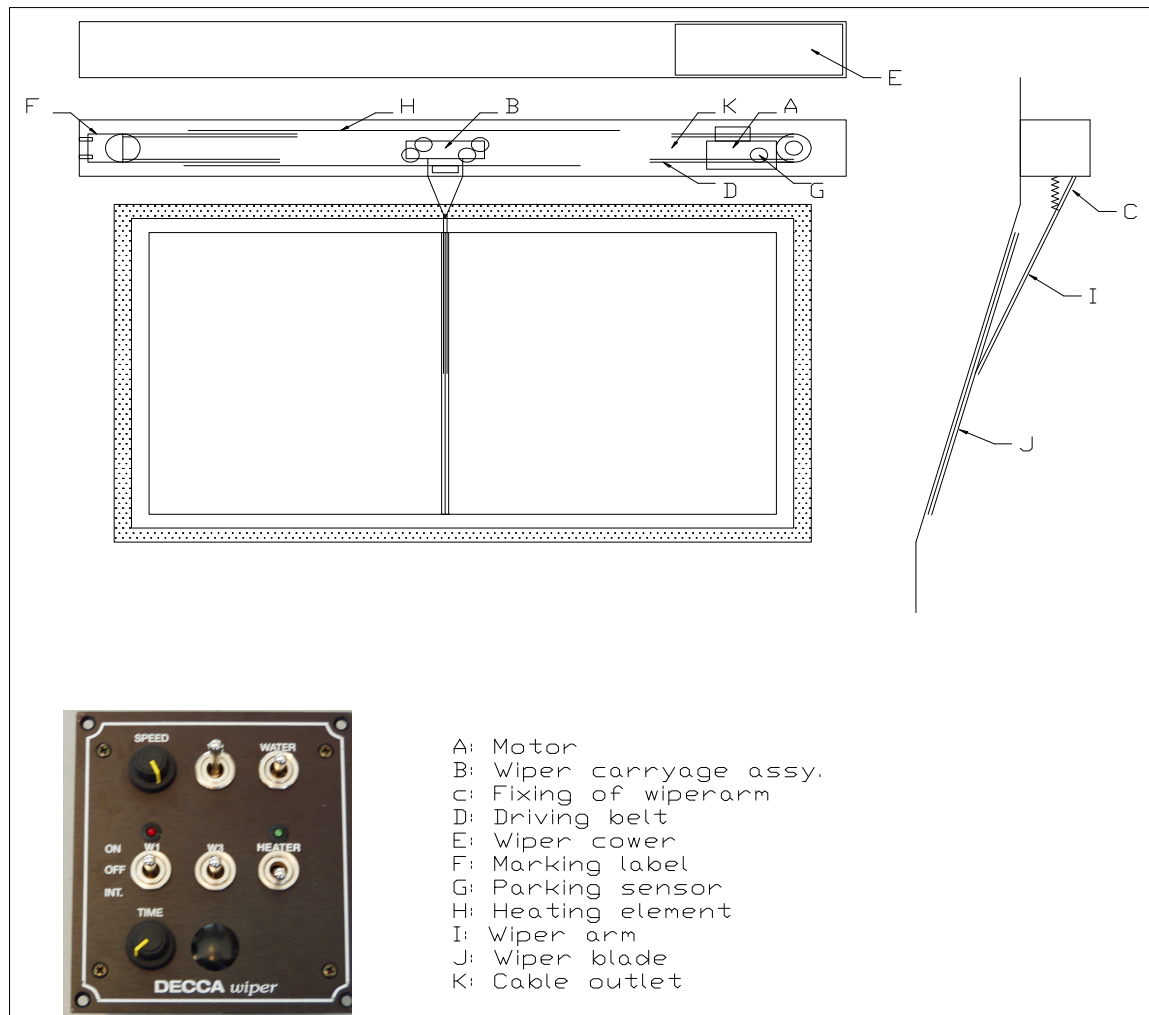
**Fig1 Single Wiper**



**Fig2 Twin Wiper**



**Fig 3 Description of components**



All materials used in the manufacturing of the Decca wiper are the very best available:

- Self- adjusting polyamide track rollers
- Sealed stainless steel bearings (AISI 316).
- Housing in seawater resistant aluminium with powder coated surface for maximum weather resistance
- Unique carriage assembly that does not weaken the drive belt

#### A. Engine

The standard motor is 220v DC, ranging from 110W to 180W.

#### B. Wiper carriage

Wiper carriage moves from side to side.

#### C. Wiper arm

Wiper arm detaches with tree screws. Adjust and adapt to the height of window.

#### D. Driving belt

All wipers have been tested for five hours before the driving belt is retightened to specified tension.

#### E. Wiper cover ( 9511570 )

The motor cover attaches to the wiper house with four stainless steel bolts.

F. Marking label

The marking labels are located inside the engine cover, and on the very left side of the wiper. On each marking label you also find the unique serial number.

G. Parking Sensor

Decca wiper has automatic parking as standard.

The wiper has an inductive sensor to start and stop the engine. No mechanical switches are involved.

H. Heating element

There are heating elements above and below roller tracks. Heating effect is 75W per meter.

I. Wiper arm

Wiper can be detached by loosening tree screws. Adjust and adapt to the height of window.

J. Wiper blade

The length of the wiper blade is maximum 1000 mm.

K. Cable outlet.

## 2. Warranty

Our equipment is guaranteed for 2 years. Wiper shall not be exposed of any additional surface treatment such as sandblasting or any other form for surface treatment. This will affect the warranty. Warranty is also voided if the wiper has been altered/modified or if it has not been installed as described in the installation manual.